

PUBLIC TRANSPORT AUTHORITY
SAFEWORKING RULES AND PROCEDURES

3025
TEMPORARY
SPEED
RESTRICTIONS

CONTENTS

1.	Purpose	3
2.	General.....	3
2.1.	Advice of a Temporary Speed Restriction.....	3
3.	Types of Signs.....	3
3.1.	Temporary Speed Restriction Ahead Sign.....	4
3.2.	Temporary Speed Restriction Start Sign.....	5
3.3.	Temporary Speed Restriction End Sign.....	5
3.4.	Placement	5
3.5.	Diverging Routes.....	6
3.6.	Adjoining Temporary Speed Restrictions.....	6
3.7.	Stopping Place Between Speed Restrictions Ahead and Speed Restrictions Start Signs.....	6
4.	General arrangement of Temporary Speed Restrictions Signs.....	7
5.	Keeping Records.....	12
6.	Reference	12
7.	Effective Date	12

1. PURPOSE

The purpose of this rule is to set out the protocols for applying a *Temporary Speed Restriction (TSR)* in the Public Transport Authority (PTA) *Network*. The object of a *TSR* is to reduce the speed of *Rail Traffic* to ensure safe passage over a *Section of Track* when the *Track* is not safe for *Normal Speed*.

2. GENERAL

A *TSR* is applied by a *Maintenance Representative*.

A *TSR* overrides any existing higher speed.

A *TSR* may be applied due to:

- *Infrastructure* conditions;
- risks to *Track Workers*; or
- weather conditions.

2.1 ADVICE OF A TEMPORARY SPEED RESTRICTON

Rail Traffic Crew must be advised about a *TSR* by *TSR* signs, and:

- the issue of a *Special Notice*; or
- the issue of a *Condition Affecting the Network (CAN)* warning.

If it is not possible to place *TSR* signs immediately, *Rail Traffic Crew* must be given written or verbal advice of the *TSR*, before they enter the affected *Section of Track*.

TSR signs must be placed as soon as practical after the *Speed Restriction* is imposed.

Rail Traffic Crew must keep the advice for the duration of the journey.

3. TYPES OF SIGNS

TSR Ahead signs are diamond shaped with a yellow background and a horizontal black stripe and:

- indicate that a *TSR* is ahead; and
- display the maximum speed permissible for each *Rail Traffic* type over the affected *Section of Track*.

The *TSR* start signs are circular shaped with a yellow background and a horizontal black stripe to indicate:

- to inform *Rail Traffic Crew* that they are entering the limits of a *TSR*; and
- the maximum speed permissible for each *Rail Traffic* type over the affected *Section of Track*.

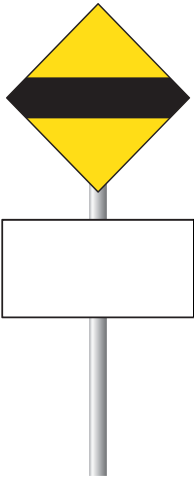
TSR end signs are white and circular to indicate to *Rail Traffic Crew* that they are leaving the limits of a *TSR*.



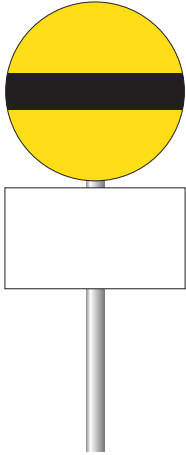
NOTE

In *Bidirectional* areas where the *TSR* applies in both directions, the back of the *TSR* start sign will indicate to *Rail Traffic Crew* that they are leaving the limits of a *TSR*.

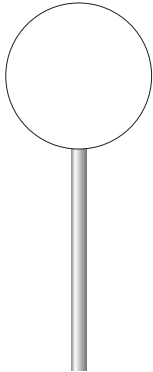
3.1. TEMPORARY SPEED RESTRICTION AHEAD SIGN

SIGN	NAME AND DESCRIPTION	REQUIRED ACTION
	<p>Temporary Speed Restriction Ahead</p> <p>This sign is placed 1000 metres from a <i>Temporary Speed Restriction Start</i> sign.</p> <p>Placed below the <i>Temporary Speed Restriction Ahead</i> sign is a <i>Speed Restriction</i> sign showing the maximum speed permitted for the restricted area.</p>	<p><i>Rail Traffic Crew</i> to <i>Proceed</i>, being prepared to bring the <i>Rail Traffic</i> under control and <i>Travel</i> at the speed shown on the <i>Speed Restriction Board</i> placed below the sign.</p> <p>Note:</p> <p>If no maximum speed is displayed on the <i>Temporary Speed Restriction Ahead</i> sign, <i>Rail Traffic Crew</i> must be prepared to reduce speed as detailed in the <i>Drivers Information</i> documentation where available, or to 15km/h over the <i>TSR</i> area.</p>

3.2. TEMPORARY SPEED RESTRICTION START SIGN

SIGN	NAME AND DESCRIPTION	REQUIRED ACTION
	<p>Temporary Speed Restriction Start</p> <p>This sign is placed 50 metres from the area covered by a <i>Temporary Speed Restriction</i>.</p> <p>Placed below the <i>Temporary Speed Restriction Start</i> sign is a <i>Speed Restriction</i> sign showing the maximum speed permitted for the restricted area.</p>	<p><i>Rail Traffic</i> is to <i>Proceed</i> at the speed shown on the <i>Speed Restriction</i> sign placed below the <i>Speed Restriction Start</i> sign.</p> <p>Note:</p> <p>If no maximum speed is displayed on the <i>Temporary Speed Restriction Start</i> sign, <i>Rail Traffic Crew</i> must be prepared to reduce speed as detailed in the <i>Drivers Information</i> documentation where available, or to 15km/h over the <i>TSR</i> area.</p>

3.3. TEMPORARY SPEED RESTRICTION END SIGN

SIGN	NAME AND DESCRIPTION	REQUIRED ACTION
	<p>Temporary Speed Restriction End</p> <p>This sign is placed 50 metres past the <i>Temporary Speed Restriction</i>.</p> <p>Note:</p> <p>In <i>Bidirectional</i> areas where the <i>TSR</i> applies in both directions, the back of the <i>TSR Start</i> sign will indicate to <i>Rail Traffic Crew</i> that they are leaving the limits of a <i>TSR</i>.</p>	<p><i>Proceed</i> at the <i>Restricted Speed</i> until the <i>Rail Traffic</i> consist has passed beyond the <i>Temporary Speed Restriction End</i> sign.</p>

3.4. PLACEMENT

TSR signs must be placed:

- wherever possible, to the left of the line to which the *TSR* applies; and
- where they can be clearly seen by *Rail Traffic Crew*.

3.5. DIVERGING ROUTES

TSR signs must be placed on all lines that might give access to the affected line.

If the *TSR* applies on a diverging *Route*, the *TSR* ahead sign and *TSR* start sign will display an arrow in the direction of the divergence, or additional text to indicate the *Track* to which the *Speed Restriction* applies.

3.6. ADJOINING TEMPORARY SPEED RESTRICTIONS

Where there are *Adjoining TSRs* and the signs would overlap, the *TSRs* are to be treated as a single *TSR* and the lowest speed will apply.

3.7. STOPPING PLACE BETWEEN SPEED RESTRICTION AHEAD AND SPEED RESTRICTION START SIGNS

Where a stopping place exists between the *Speed Restriction Ahead* and the *Speed Restriction Start* signs, a *Speed Restriction Ahead* sign must be placed at the departure end of the *Stopping Place* before the *Speed Restriction Start* sign.

Attached to the sign will be the letter R and a *Speed Restriction* sign showing the speed the *Rail Traffic* is to proceed over the restricted area.

4. GENERAL ARRANGEMENT OF TEMPORARY SPEED RESTRICTION SIGNS

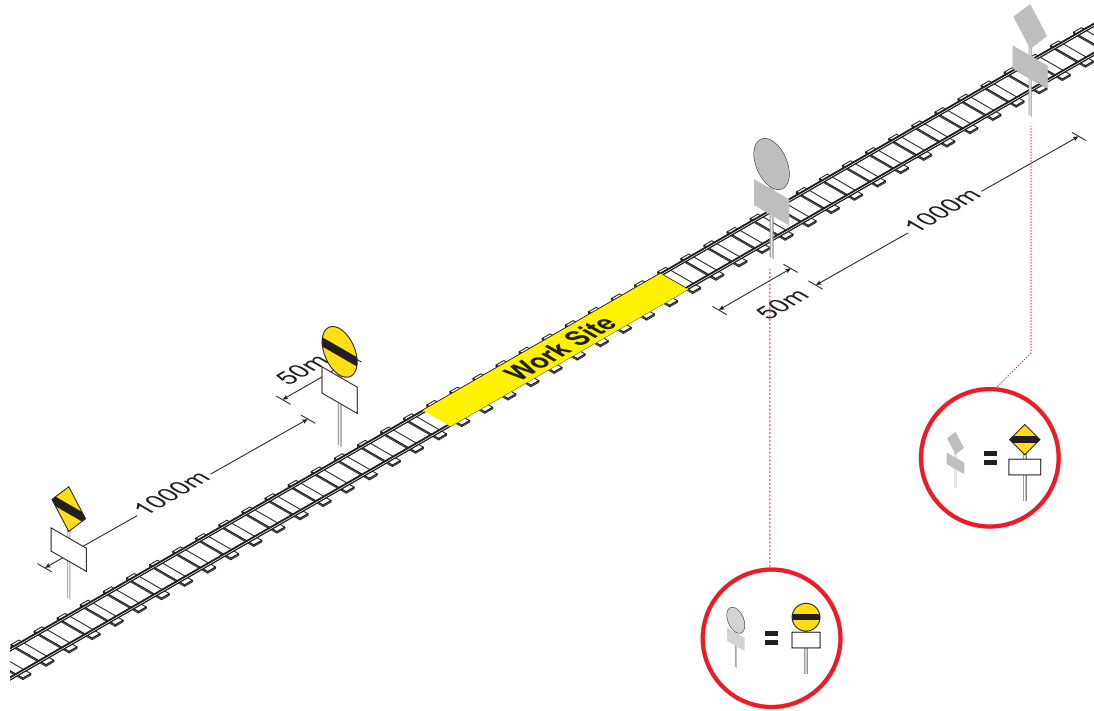


FIGURE: 4.1 General arrangement of TSR signs for single Bidirectional Track.

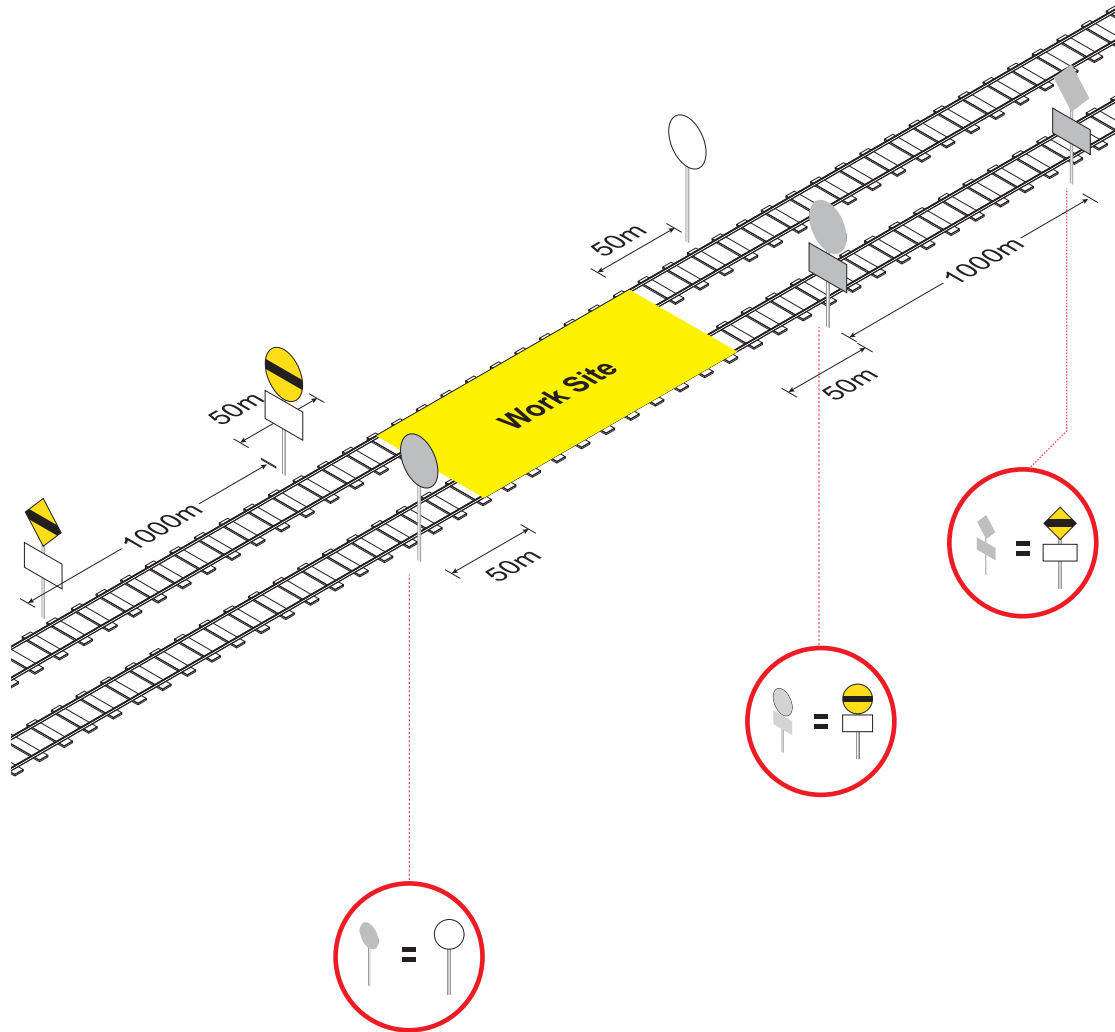


FIGURE: 4.2 General arrangement of TSR signs on double line Unidirectional Track.

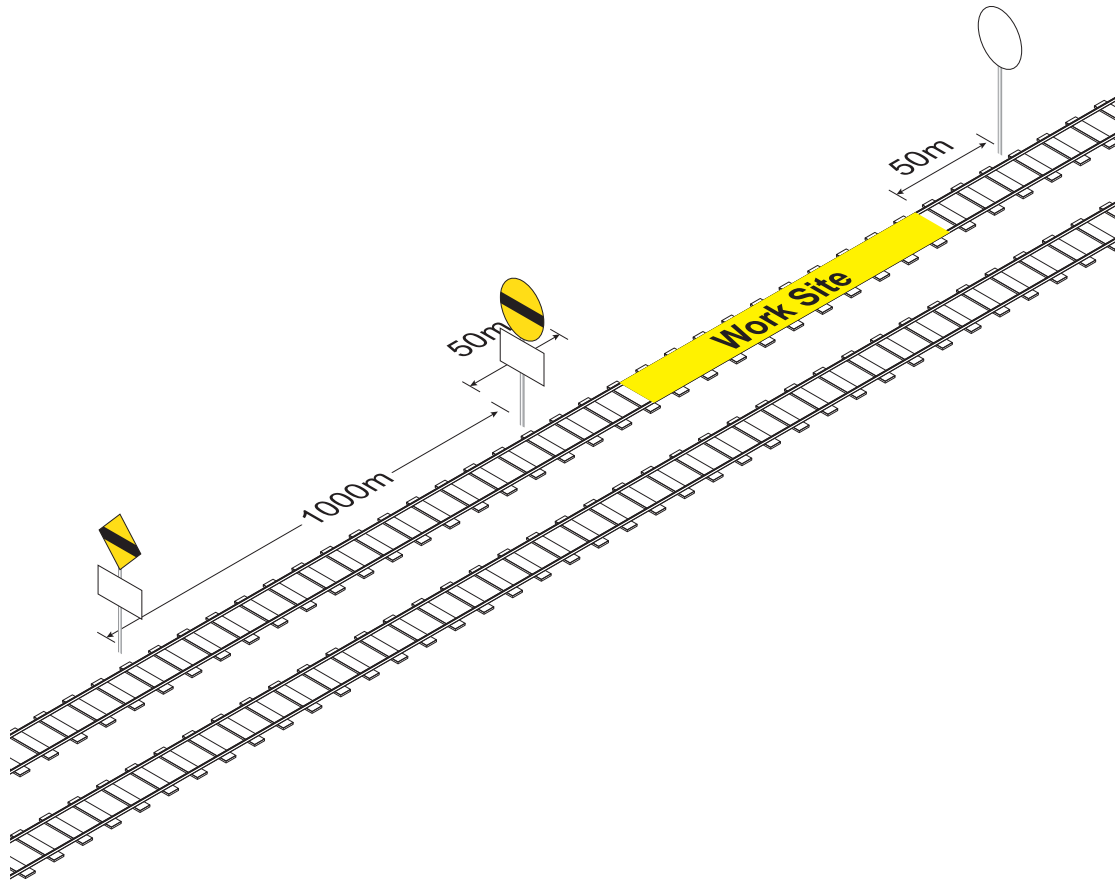


FIGURE: 4.3 General arrangement of TSR signs on double line Unidirectional Track where only one line is affected.

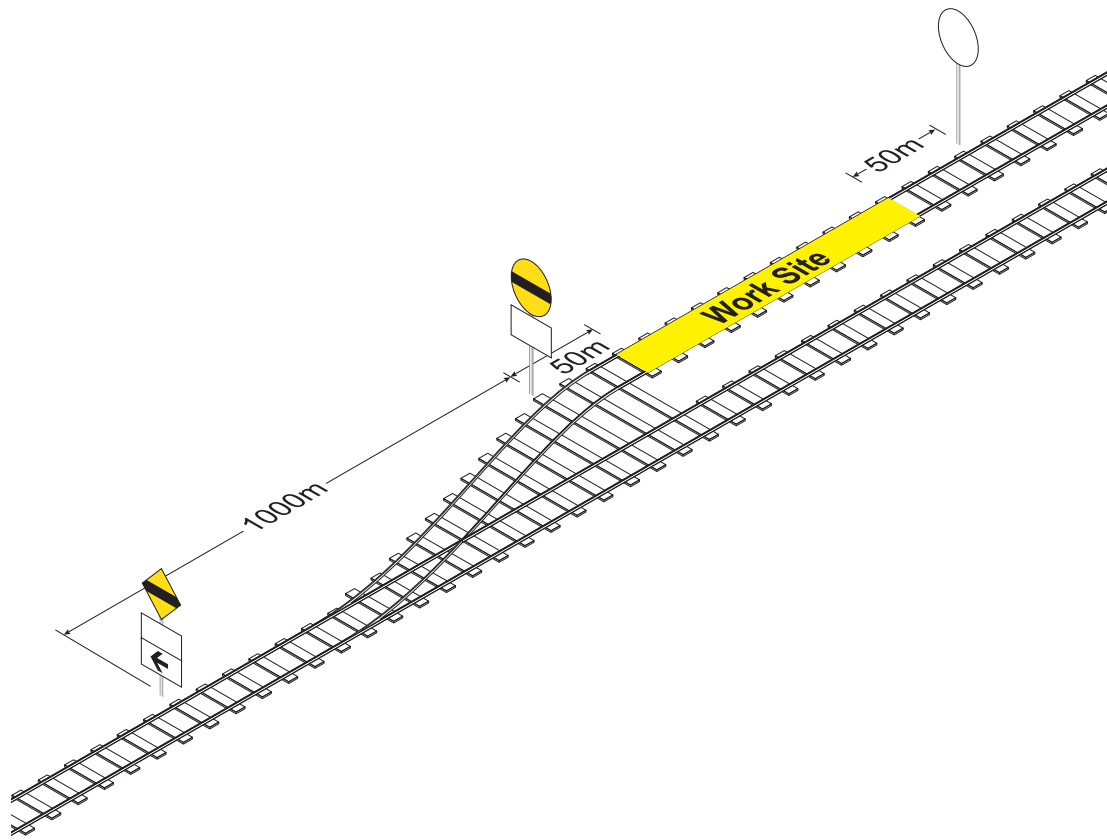


FIGURE: 4.4 General arrangement of TSR signs for a diverging line.

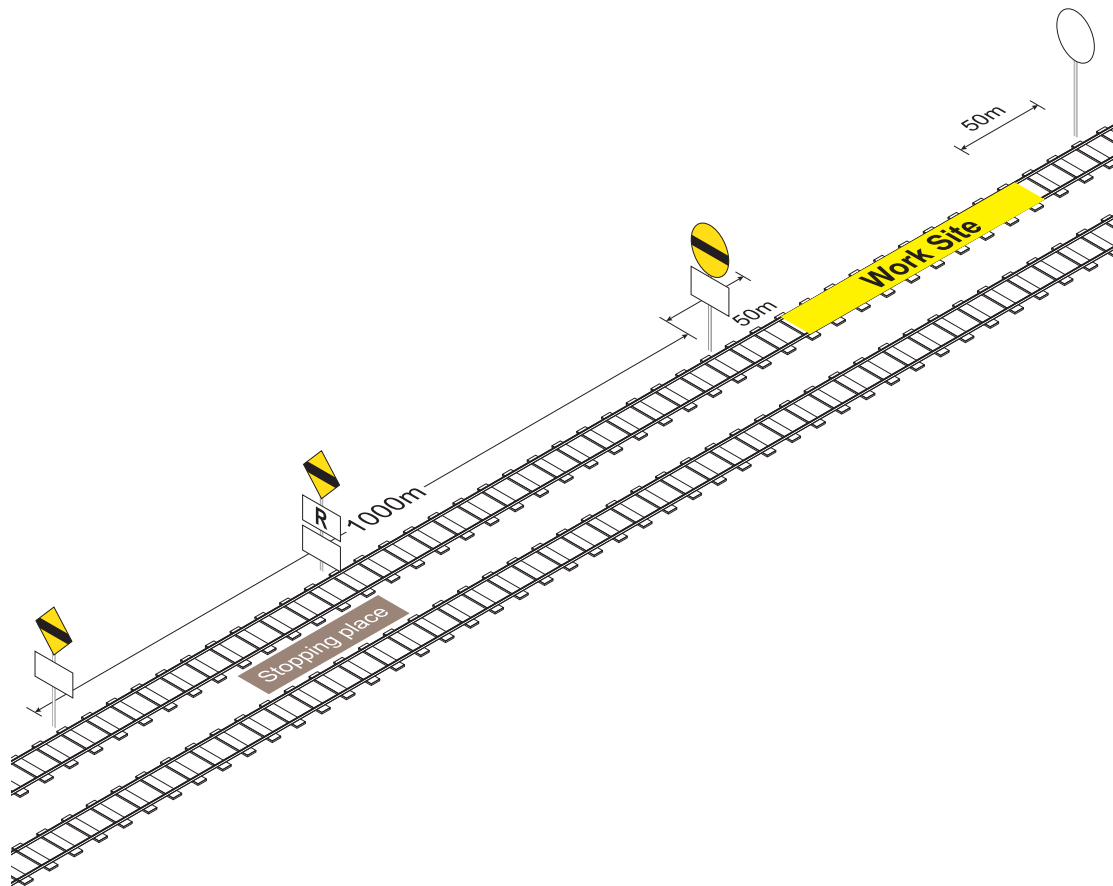


FIGURE 4.5 General Arrangement of TSR signs when a stopping place is between the Speed Restriction ahead and the Speed Restriction Starts signs.

5. KEEPING RECORDS

Maintenance Representatives, Rail Traffic Crew and Train Controllers must keep a Permanent Record of the details of TSRs.

6. REFERENCE

Rule 2009 Reporting and Responding to a Condition Affecting the Network (CAN)

7. EFFECTIVE DATE

| 19 February 2016