

## East Perth Station upgrade

Project Update #3  
March 2017



Once complete, the \$25 million upgrade will make the station more modern, accessible and better able to host larger crowds when Perth Stadium opens in 2018.

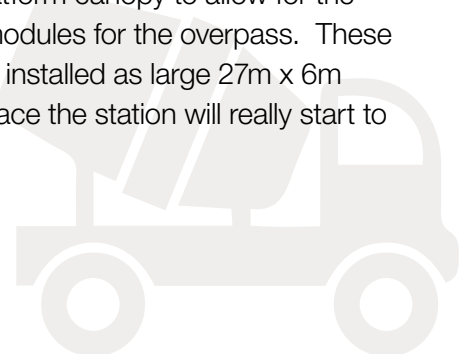
Artist's impression of the upgraded East Perth Station

### Work on the East Perth Station upgrade is progressing well with the new platform walls in place at the northern end and backfilling underway.

In addition, the concrete foundations for the overpass have been poured and the lift pits at the platform and two entrances have been installed. Storm water drainage, signalling pits, and electrical and communication services have also been installed.

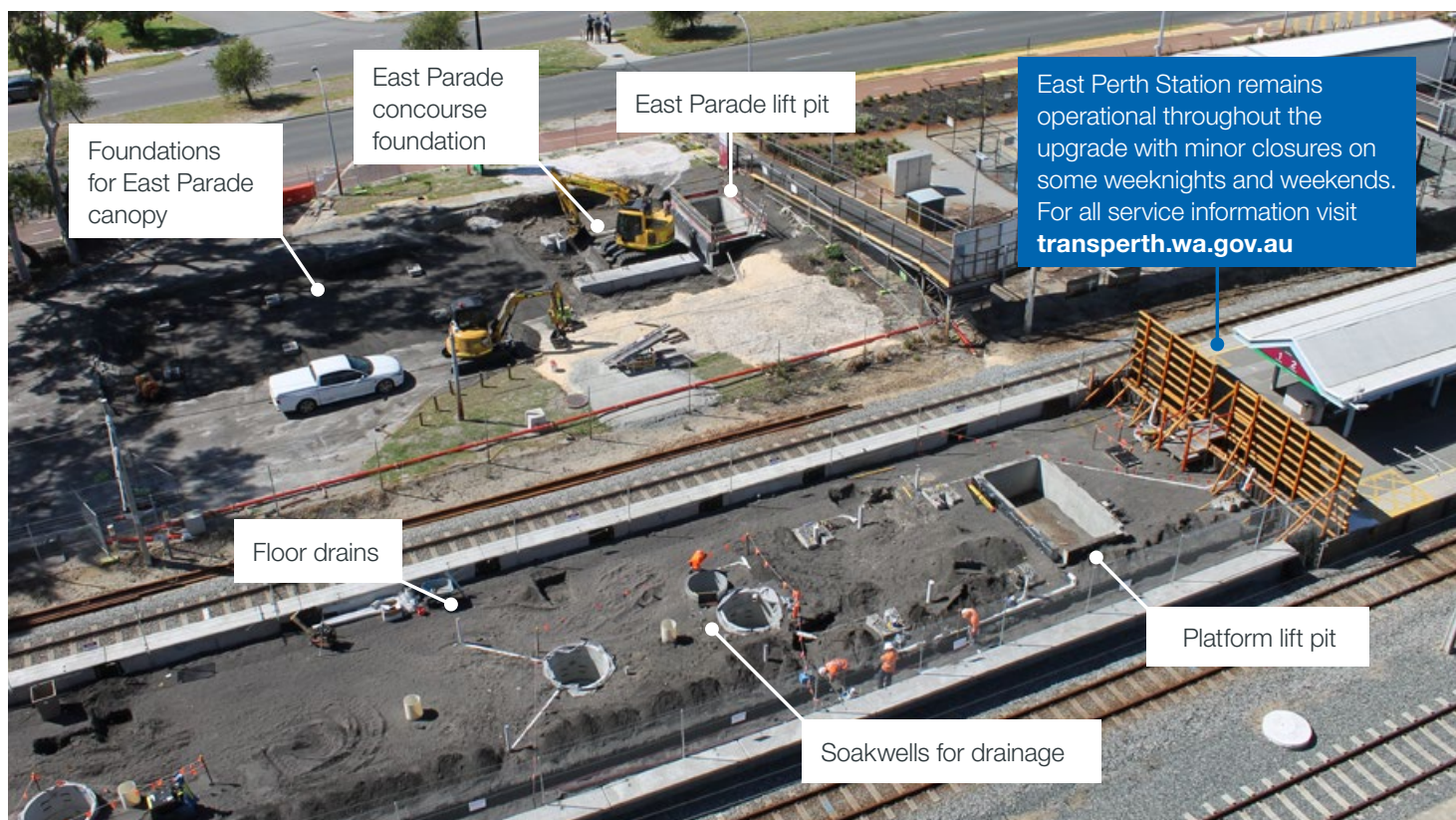
ACROD parking bays in the West Parade car park have been relocated and the pedestrian access between the station and the Public Transport Centre has reverted back to the original alignment.

In addition to track works, in the coming months works will include removal of another section of the Indian Pacific platform canopy to allow for the installation of steel modules for the overpass. These will be delivered and installed as large 27m x 6m modules. Once in place the station will really start to take shape.



Visit [perthstadium.com.au](http://perthstadium.com.au) or [pta.wa.gov.au](http://pta.wa.gov.au) for details of all the available transport options.





## Out-of-hours works


Standard construction hours are 7am to 7pm, Monday to Saturday. To prevent disruption to Midland Line services and ensure the safety of our passengers and general public, the following work is required outside of these hours.

Date	Task and location
<b>Sunday 2 April to Monday 3 April 2017</b> between 7pm and 5am each day;	<ul style="list-style-type: none"> <li>• Build scaffold on the Indian Pacific platform to support the Public Transport Centre canopy;</li> <li>• Demolish and remove part of the Public Transport Centre canopy;</li> <li>• Move materials into the island corridor, between the tracks;</li> <li>• Receive delivery of steel to site;</li> <li>• Assemble and install steel columns and platform wall posts;</li> <li>• Install overhead line equipment foundations;</li> <li>• Install signals and local conduit; and</li> <li>• Install services.</li> </ul>
<b>Tuesday 4 April to Wednesday 5 April 2017</b> between 7pm and 7am each day;	
and	
<b>Saturday 8 April from 7pm to Tuesday 11 April 2017 7am.</b>	

All work will follow an approved Noise Management Plan, however some noise and disturbance is unavoidable. There will also be higher-than-usual truck movements during the day and night for the delivery of construction materials.

Monitors will be set up in various locations within the construction area to monitor noise levels. We apologise for these disruptions and any inconvenience they may cause.

During out-of-hours works, if you feel there is excessive noise please contact the **Site Supervisor directly on 0428 358 569**. This allows them to immediately review the source of the noise and if possible, put mitigation measures in place. Alternatively, for daytime feedback and other enquiries about the project, please contact the Perth Stadium project team on **9428 1961** or visit [perthstadium.com.au](http://perthstadium.com.au) or [pta.wa.gov.au](http://pta.wa.gov.au).



Hand mixing concrete for the installation of the electrical and communications pits. Each pit sits on a small slab and since it only requires a small quantity of concrete, it is mixed by hand.





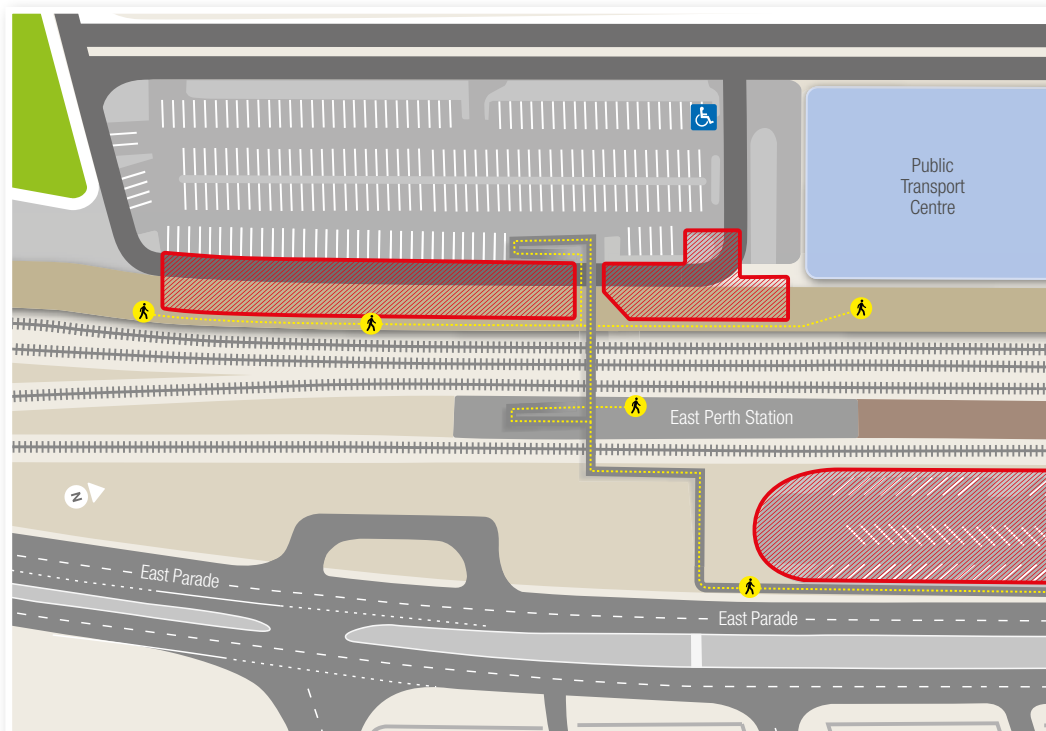
## Virtual Reality App

Our East Perth Station Upgrade virtual reality app has recently been updated with a video explaining the changes that will take place. There'll also be more updates coming soon including 360-degree construction images, interviews with various members of the design and construction team as well as time lapse vision and new artist impressions.

**Haven't got the app yet?** You can take a sneak peek of the upgraded station using your smart phone or tablet by downloading the free EPSU app from the Google Play or Apple Store. Once downloaded, click the 'Virtual Reality' tab and then the map for 360-degree views of what the station will look like once works are complete.



## Pedestrian Diversion



**This pedestrian diversion will remain in place until at least mid-May. The passenger impacts will be as follows:**

- Access between the Public Transport Centre (PTC) and the East Perth Station footbridge will revert back to the previous alignment and will be via the Indian Pacific platform
- The ACROD parking bays at the southern end of the PTC have also been relocated.

**Note** – there will be days where access between the PTC and Indian Pacific platform will need to be diverted through the car park.

### MORE INFORMATION

For more details about the upgrade, including information on impacts for passengers, local residents and cyclists, please see the East Perth Station upgrade **fact sheet** and **project page** at [www.pta.wa.gov.au](http://www.pta.wa.gov.au)

Stay informed of the project's progress by **registering for email updates** at [www.pta.wa.gov.au](http://www.pta.wa.gov.au) under the Projects tab. Please direct queries regarding this project to 9428 1961 or [projects@pta.wa.gov.au](mailto:projects@pta.wa.gov.au)

More information on Perth Stadium and transport options to the new venue can be found at [perthstadium.com.au](http://perthstadium.com.au)