

# East Perth Station upgrade

Project Update #2  
January 2017



Artist's impression of the upgraded East Perth Station

**Work on the East Perth Station Upgrade project is now well underway with a new temporary platform installed at the southern end of the station, the northern section of the island platform demolished and bulk earthworks complete. Work to install the pre-cast platform walls will begin in February.**



Part of the Indian Pacific platform canopy was removed to allow works to start on the overpass which will have lifts and stairs on the platform and the two entrances.

The southern section of the East Parade car park (closest to the station) is closed for construction vehicles and deliveries. As such the SmartParker and Pay 'n' Display ticket machines were moved to the centre of the car park.

Once complete, the \$25 million upgrade will make the station more modern, accessible and better able to host larger crowds expected once Perth Stadium opens in 2018.





Part of the Indian Pacific platform canopy has been removed to allow works to start on the new overpass which will include lifts and stairs on the platform and at each entrance.

## Out-of-hours works

To continue work on the East Perth Station upgrade, the following out-of-hours work is required:

| Date   | Task and location  |
|--|--|
| Monday 30 January to Thursday 2 February<br>– between 7pm and 5am each day | <ul style="list-style-type: none"> <li>Install canopy footings (precast concrete panels) on the Indian Pacific platform at the Public Transport Centre.</li> </ul>   |
| Monday 6 to Friday 10 February –<br>between 8pm and 5am each day           | <ul style="list-style-type: none"> <li>Install platform wall foundations and signal pit.</li> </ul>  |
| Sunday 12 to Monday 20 February –<br>between 8pm and 5am each day          | <ul style="list-style-type: none"> <li>Install platform frames and precast wall panels.</li> <li>Install fencing within rail corridor to create a safe construction site to build the new island platform during the daytime, limiting the need for future train disruptions and night works.</li> </ul> |

**This work is required to take place during these hours to prevent disruption to Midland Line services.**



All work will follow an approved Noise Management Plan, however some disturbance is unavoidable. We envisage some dust, noise and light vibration as a result of these works. There will also be higher-than-usual truck movements during the day and night for the delivery of construction materials.

Monitors will be set up in various locations within the construction area to monitor dust, noise and vibration levels. We apologise for these disruptions and any inconvenience they may cause.

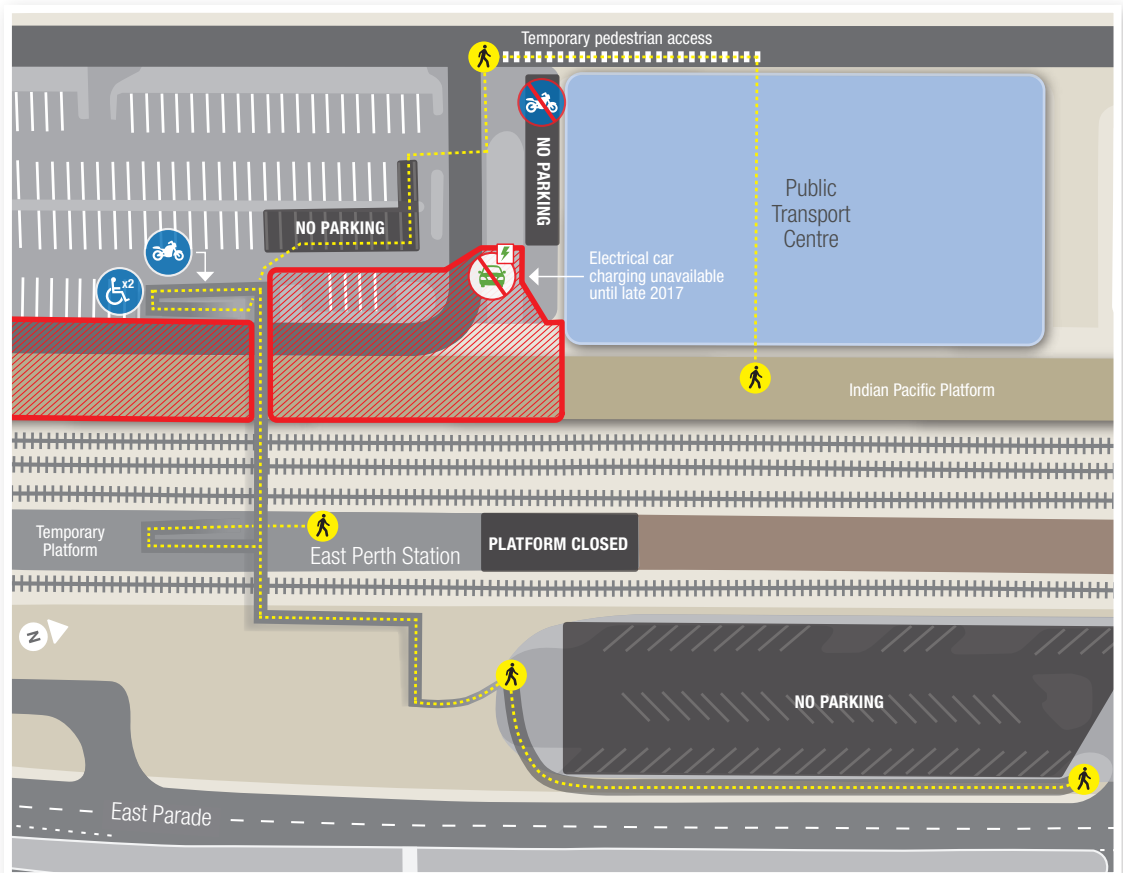
Standard construction hours are 7am to 7pm, Monday to Saturday. During out-of-hours works, if you feel there is excessive noise please contact the **Site Supervisor directly on 0428 358 569**. This allows them to immediately review the source of the noise and if possible, put mitigation measures in place. Alternatively, for daytime feedback and other enquiries about the project, please contact the Perth Stadium project team on **9428 1961** or visit **[perthstadium.com.au](http://perthstadium.com.au)** or **[pta.wa.gov.au/projects](http://pta.wa.gov.au/projects)**



The pedestrian diversion (map on the right) will remain in place up until the end of May. The diversion means:

- Access between the Public Transport Centre (PTC) / Indian Pacific platform and East Perth Station footbridge will be via the front entrance of the PTC.
- The ACROD parking bays at the southern end of the PTC have been relocated.
- Motorcycle parking immediately south of the PTC is closed, however more parking is available under the footbridge.
- The electrical car-charging station is now unavailable until the end of the project.
- The southern end of the East Parade car park is closed.

## Pedestrian Diversion



## Virtual Reality App



### Coming soon!

Through virtual reality technology, you can take a sneak peek at the upgraded East Perth Station using your smart phone or tablet and experience 360-degree views of what it will look like once the works are complete. To download the free app, visit the Google Play or Apple Store on your device from 31 January and type 'East Perth Station Upgrade'.



#### MORE INFORMATION

For more details about the upgrade, including information on impacts for passengers, local residents and cyclists, please see the East Perth Station upgrade [fact sheet](#) and [project page](#).

Stay informed on project progress by [registering for email updates](#). Please direct queries regarding this project to 9428 1961 or [projects@pta.wa.gov.au](mailto:projects@pta.wa.gov.au)

For more information on Perth Stadium and transport options to the new venue can be found at [perthstadium.com.au](http://perthstadium.com.au)